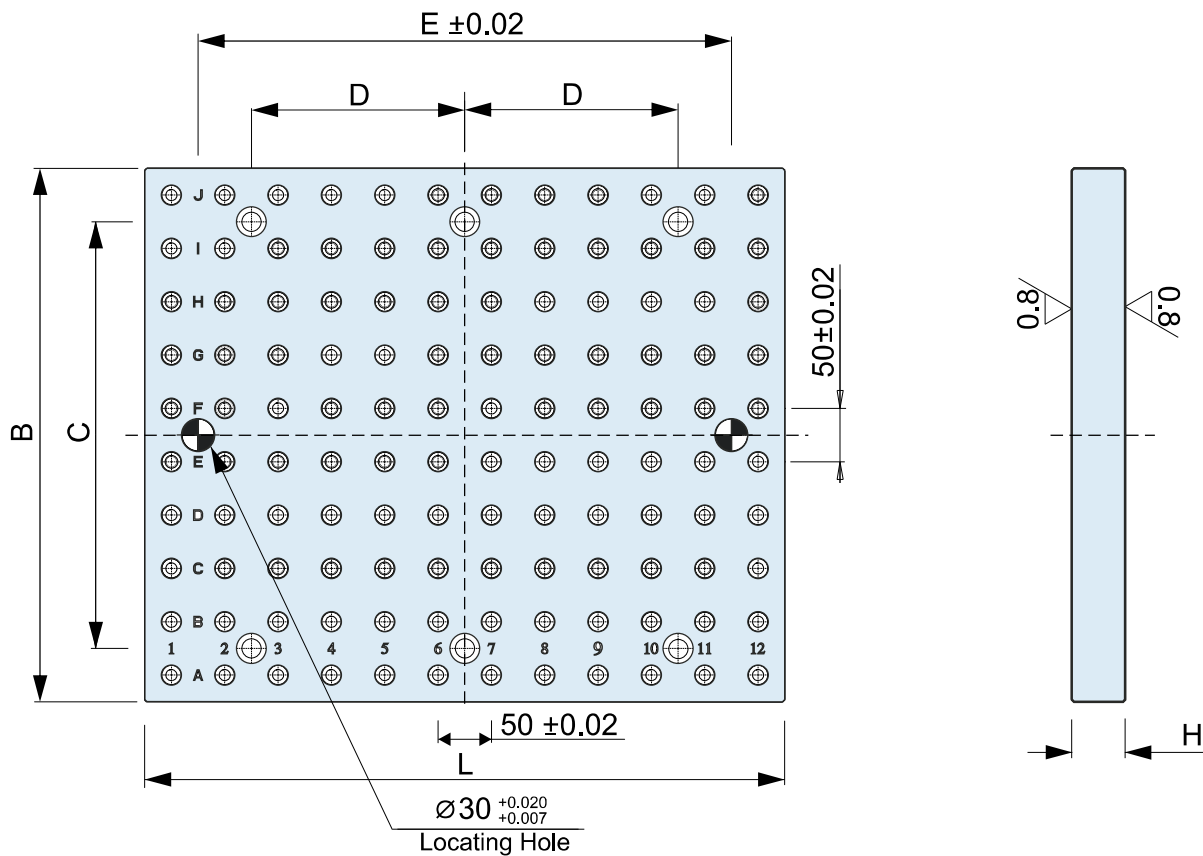
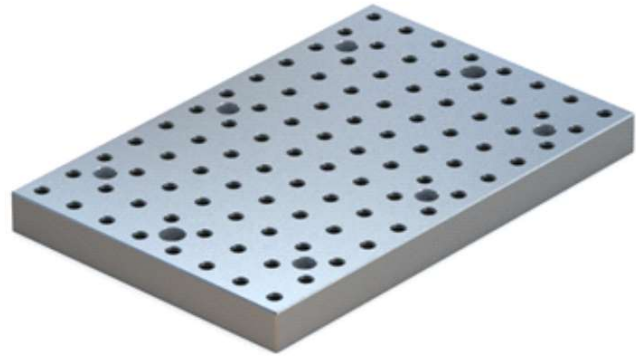


BU40120 – Baseplate with grid holes

- ▶ Cast iron grade-300 / C45
- ▶ Both face ground, Plates mounting holes as per customer requirement.
- ▶ Available in Ø12 or Ø16 bushings.
- ▶ Customized sizes and material are available upto 5000mm*2800mm on request.



Part No.	L	B	H	E
BU40120-600_400	600	400	50	500
BU40120-600_500	600	500	50	500
BU40120-600_600	600	600	50	500
BU40120-800_400	800	400	50	700
BU40120-900_450	900	450	50	800
BU40120-1000_500	1000	500	50	900
BU40120-1200_600	1200	600	50	1100